

OPS48200-HB

48VDC 50-500A

OUTDOOR TELECOM POWER SYSTEM



TELECOM



TRAFFICLIGHTS



MOUNTAINS



Highly Flexible Robust Complete Solution For Outdoor Telecom Systems

+ EnSmart Power's outdoor telecom solar power systems are designed for Network base stations, Wireless applications, Fixed line application, data communications.

+ Reliable and energy-efficient OPS48500-HB telecom solar power system protect against grid power interruptions and fluctuations and help operators reduce operation costs and their carbon footprint.

+ The whole system integrates high power density rectifiers, intelligent solar controller, battery and adaptable PDUs, remote monitoring, performing in high level in a robust enclosure.

+ Besides well protected by IP55 class enclosure, highly flexible thermal system can overcome different environmental challenges, It helps the battery life to be lengthened, and the sensitive telcom system can work in a perfect condition.

Applications of OPS48500-HB outdoor telecom solar DC power system

Network base stations, Wireless applications, Fixed line application, data communications, Power plant or substation power for controlling, protection and automatic device, emergency lighting, steam turbine DC oil pump and Independent outdoor DC power supply systems. OPS48500-HB can provide reliable power supply in the case of a power failure completely in plant or substation.

The traditional DC systems use battery pack to run with float charging mode. The EnSmart Power OPS48500-HB DC system run with silicon controlled rectifying power supply for battery.

Excellent Dust-proof, Water-proof Design

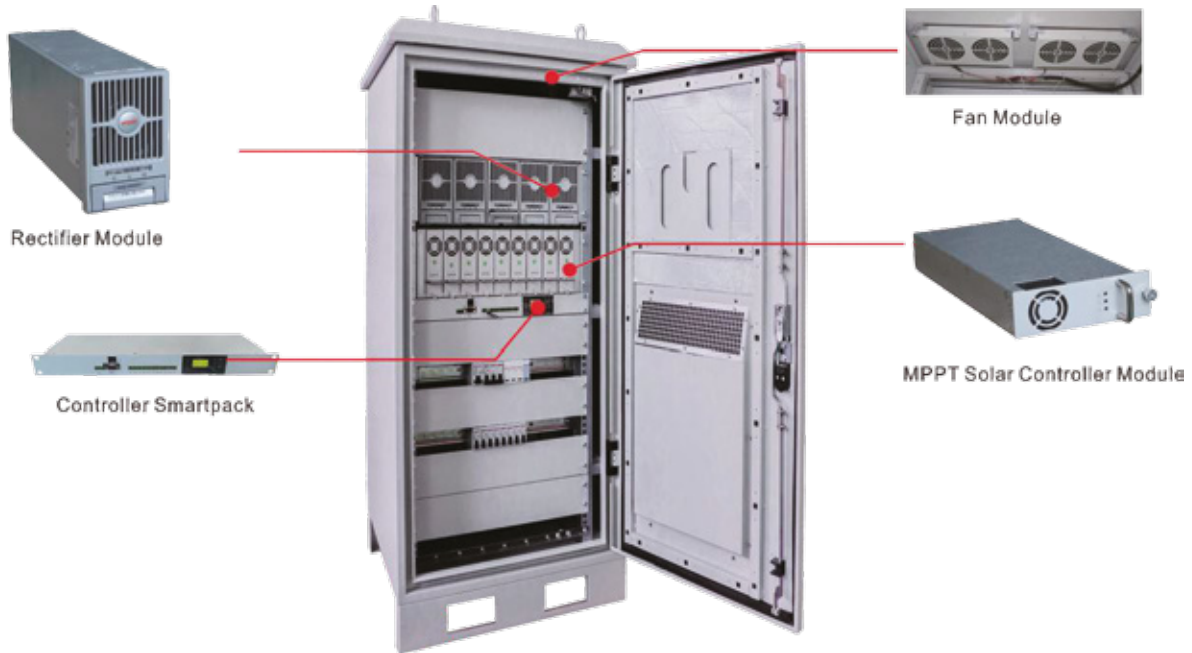
According to the overall standard of design dust-proof and water-proof Ip55

+ With sun protection, heat insulation, roof ventilation

+ With waterproof and the filtration dust inlet, the cabinet front door shutters



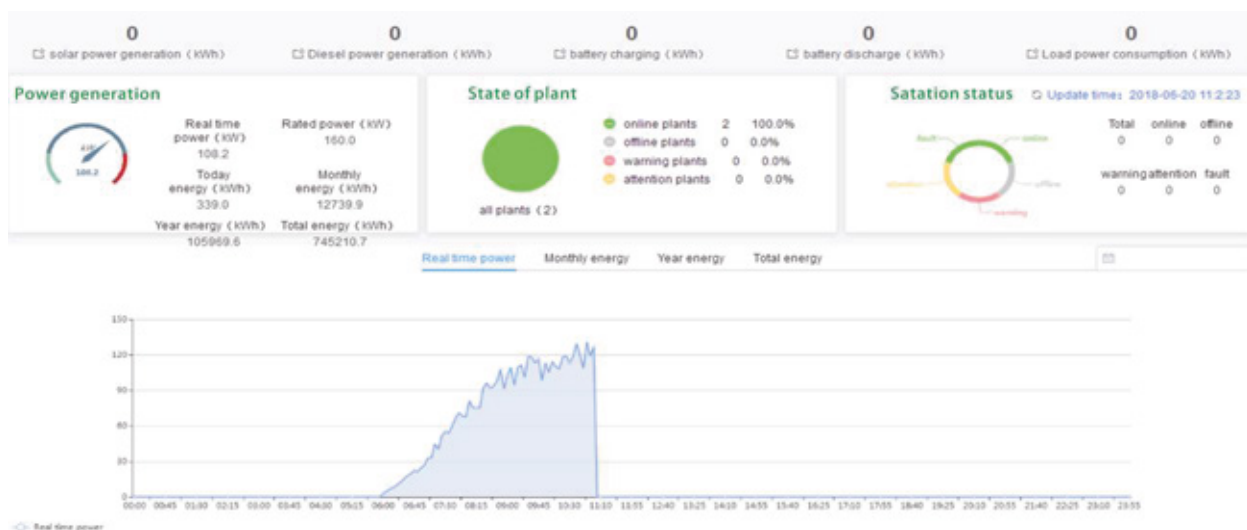
SOLAR DC POWER



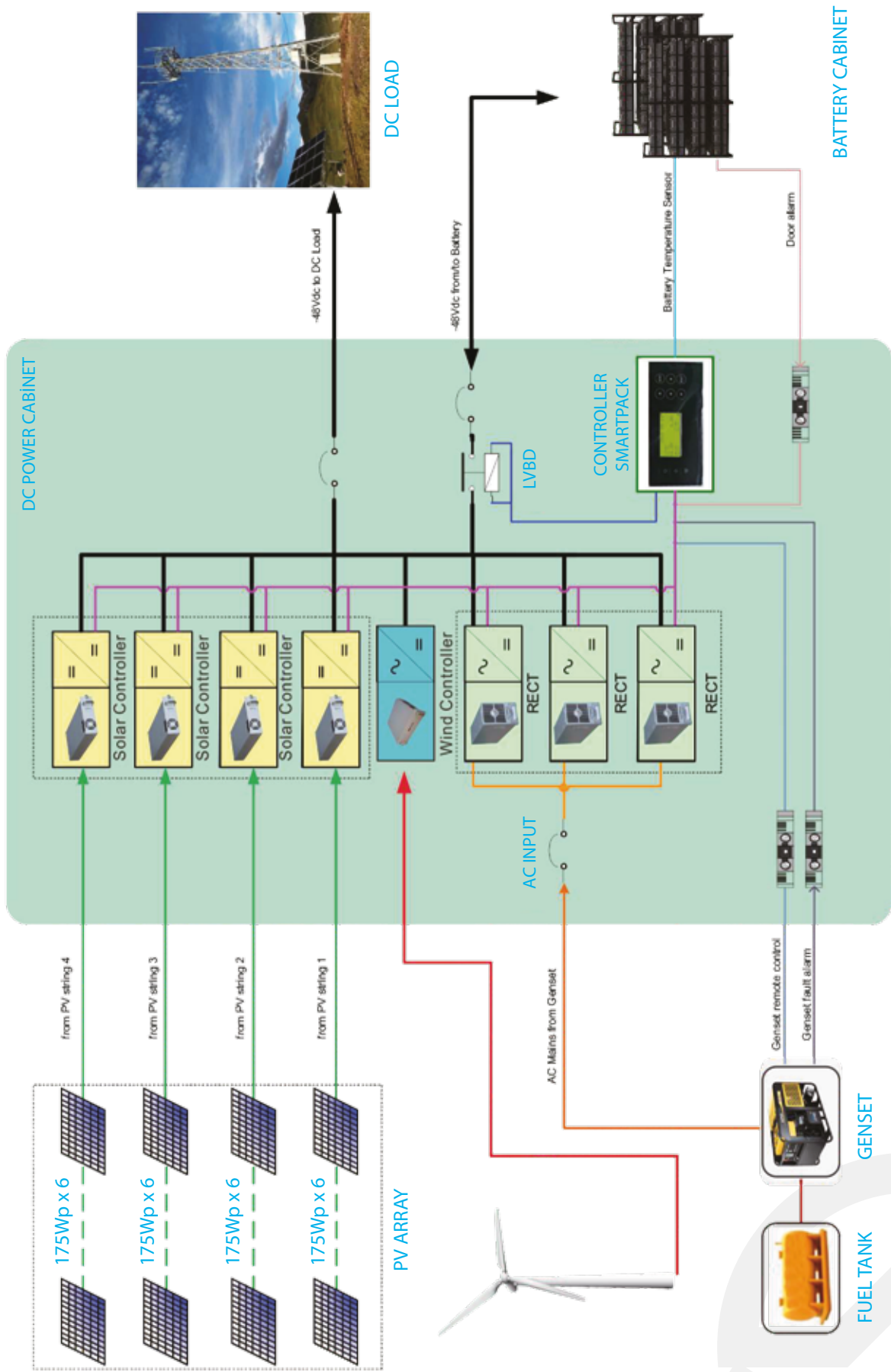
Key Features

- + Industry-leading power density compact size and high reliability;
- + Resistant outdoor enclosure made of aluminum IP 55 protection class.
- + Several size options, ensuring right dimensions for telecom equipment.
- + Advanced MCU microprocessor control technology.
- + Advanced MPPT Technology, High converting efficiency 98% for minimizing energy loss.
- + Support Remote Monitoring and Management Solution (RMMS) function.
- + Bottom cable entry with flexible configuration of cable glands.
- + Air ventilation (AV) and air filter modular structure of internal equipment to meet specific customer requirements.
- + Reversed current protection at night, over voltage and reverse polarity protection.
- + Selectable charging modes for various types of batteries.
- + Waterproof and Dustproof structure,
- + Equipped with waterproof lock on the door, double insulation design;
- + High quality galvanized sheet cabinet or aluminum coated steel sheet as material, surface coating anti-UV power;
- + Lock mechanism completes the protection of installed equipment.

Remote Monitoring System Interface



SOLAR DC POWER



SOLAR DC POWER

OPS48200-HB Solar System	Rectifier Module(1-10)	MPPT Solar Charge Controller(1-10)
INPUT		
MPPT Range @Operating Voltage	60 ~115VDC	
Maximum PV Array Open Circuit Voltage	145VDC	
Maximum PV Array Power	3000W	
Maximum Input Current	50A	
OUTPUT		
Nominal Battery Voltage	42-58VDC	
Maximum Charge Current	50A	
Maximum Efficiency	98%	
Charging Method	Three stages: bulk, absorption and floating	
PROTECTION		
Overload Protection	> 110% : audible alarm	
Overcharge Protection	Yes	
Polarity Reversal Protection @ Solar Cell & Battery	Yes	
INDICATORS		
LCD Panel	LCD panel indicating solar power, load level, battery voltage/capacity, charging current, and fault conditions	
LED Display	Three indicators for solar, charging, and load status	
Rectifier Module		
Rated input voltage	220V	
AC input Voltage range	90-290V	
AC input Frequency range	45-65HZ	
Power factor	≥0.99	
Efficiency	>92%	
Rated output voltage	48V	
Rated output current	0-50A	
Voltage range	42-58V	
WIND CONTROLLER:		
Input Power	1KW/2KW	
Input Voltage	150-300VAC	
Output Voltage	48VDC	
Output Current	30A/50A	
ENVIRONMENT		
Humidity	0 ~ 100% RH (No condensing)	
Operating Temperature	-20°C to 55°C	
Storage Temperature	-40°C to 75°C	
Altitude	0 ~ 3000 m	

STANDARD:EMC 62040 EN 55032 LCD:EN60950

Note: Product specifications are subject to change without further notice.